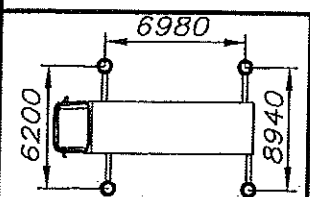
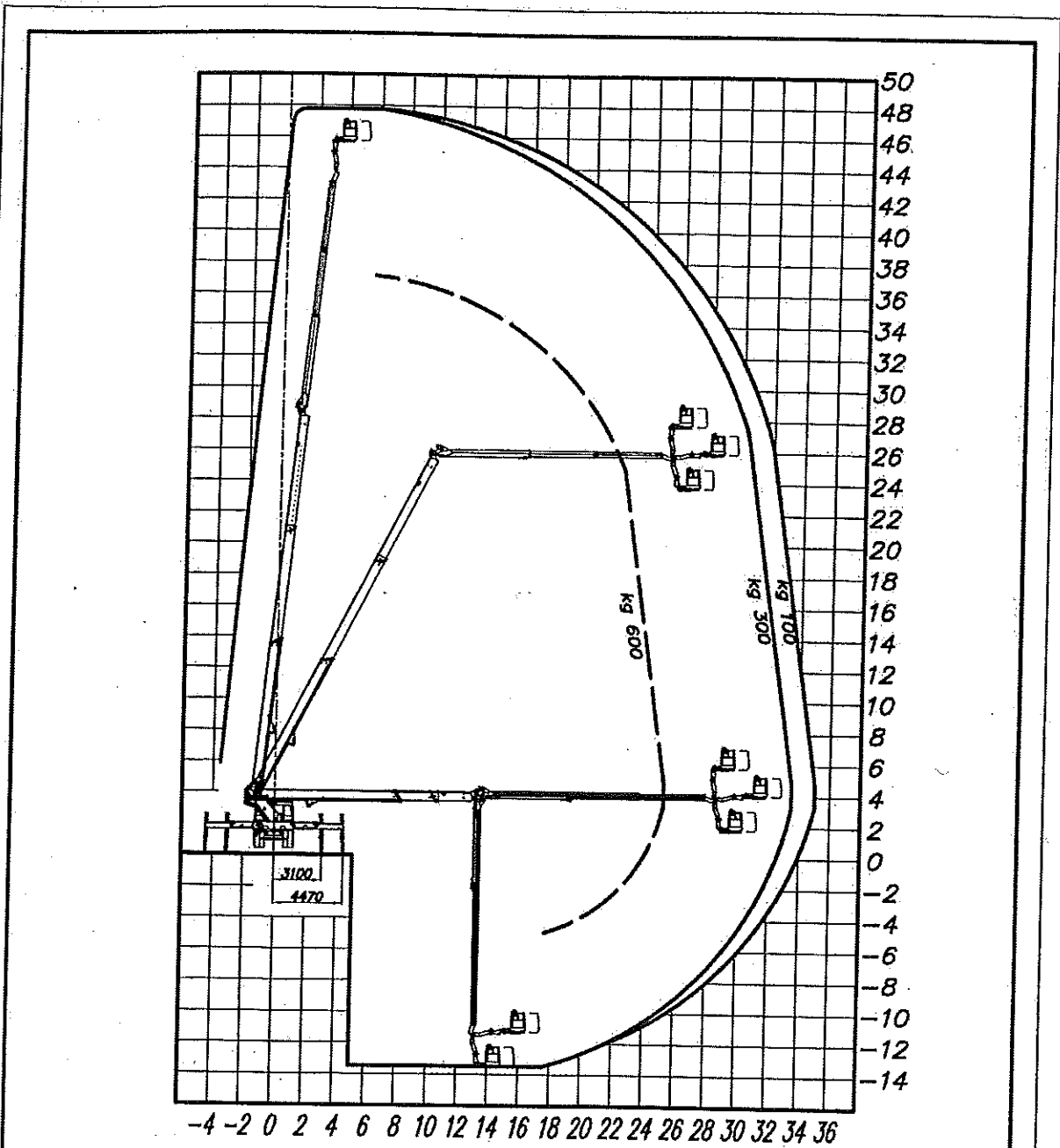


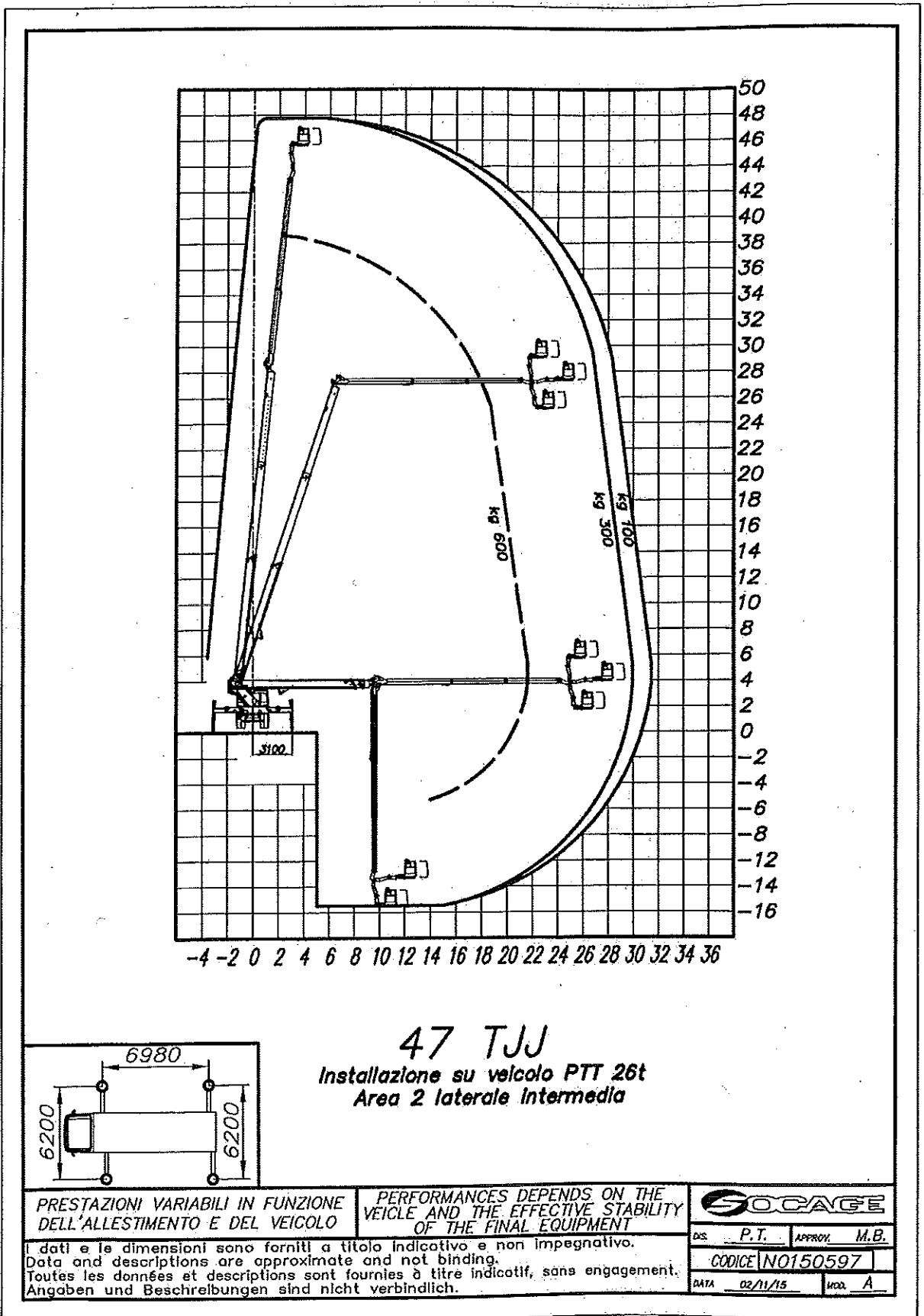
AREA DI LAVORO 1 - LATERALE CON TRAVERSE COMPLETAMENTE ESTESE
N0150596 (1)



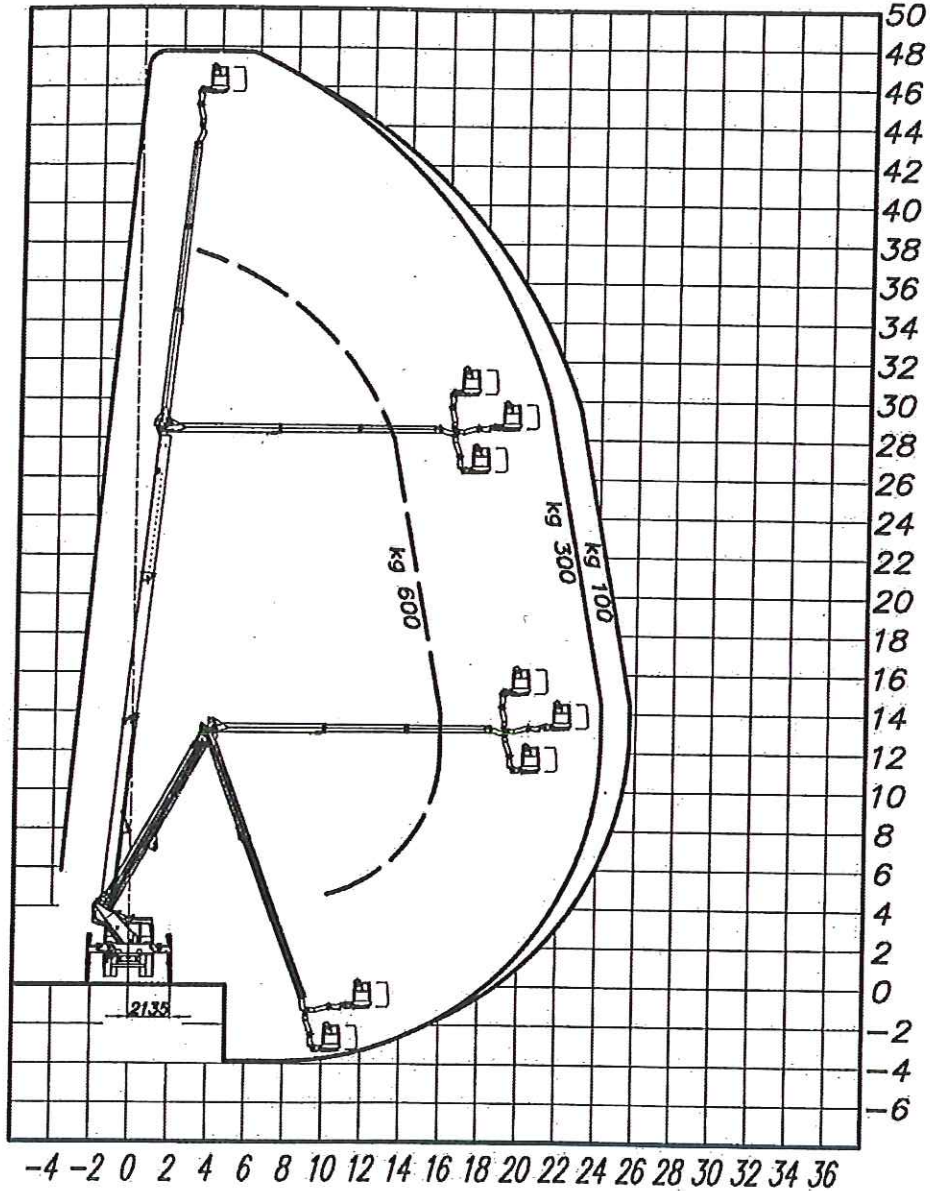
47 TJJ
 Installazione su veicolo PTT 26t
 Area 1 laterale massima

PRESTAZIONI VARIABILI IN FUNZIONE DELL'ALLESTIMENTO E DEL VEICOLO	PERFORMANCES DEPENDS ON THE VEICLO AND THE EFFECTIVE STABILITY OF THE FINAL EQUIPMENT	SOCAGE
I dati e le dimensioni sono forniti a titolo indicativo e non impegnativo. Data and descriptions are approximate and not binding. Toutes les données et descriptions sont fournies à titre indicatif, sans engagement. Angaben und Beschreibungen sind nicht verbindlich.		DS P.T. APPROV. M.B.
		CODICE N0150596
		DATA 02/11/15 MOD. A

AREA DI LAVORO 2 - LATERALE CON TRAVERSE PARZIALMENTE ESTESE - N0150597

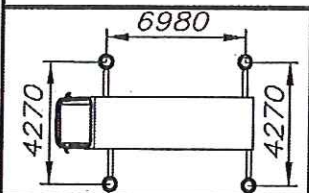


AREA DI LAVORO 3 - LATERALE CON TRAVERSE PARZIALMENTE ESTESE - N0150598



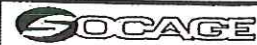
47 TJ

**Installazione su veicolo PTT 26t
Area 3 laterale intermedia**



PRESTAZIONI VARIABILI IN FUNZIONE DELL'ALLESTIMENTO E DEL VEICOLO

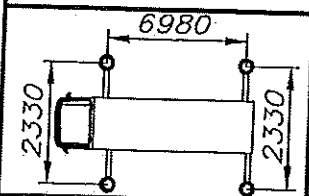
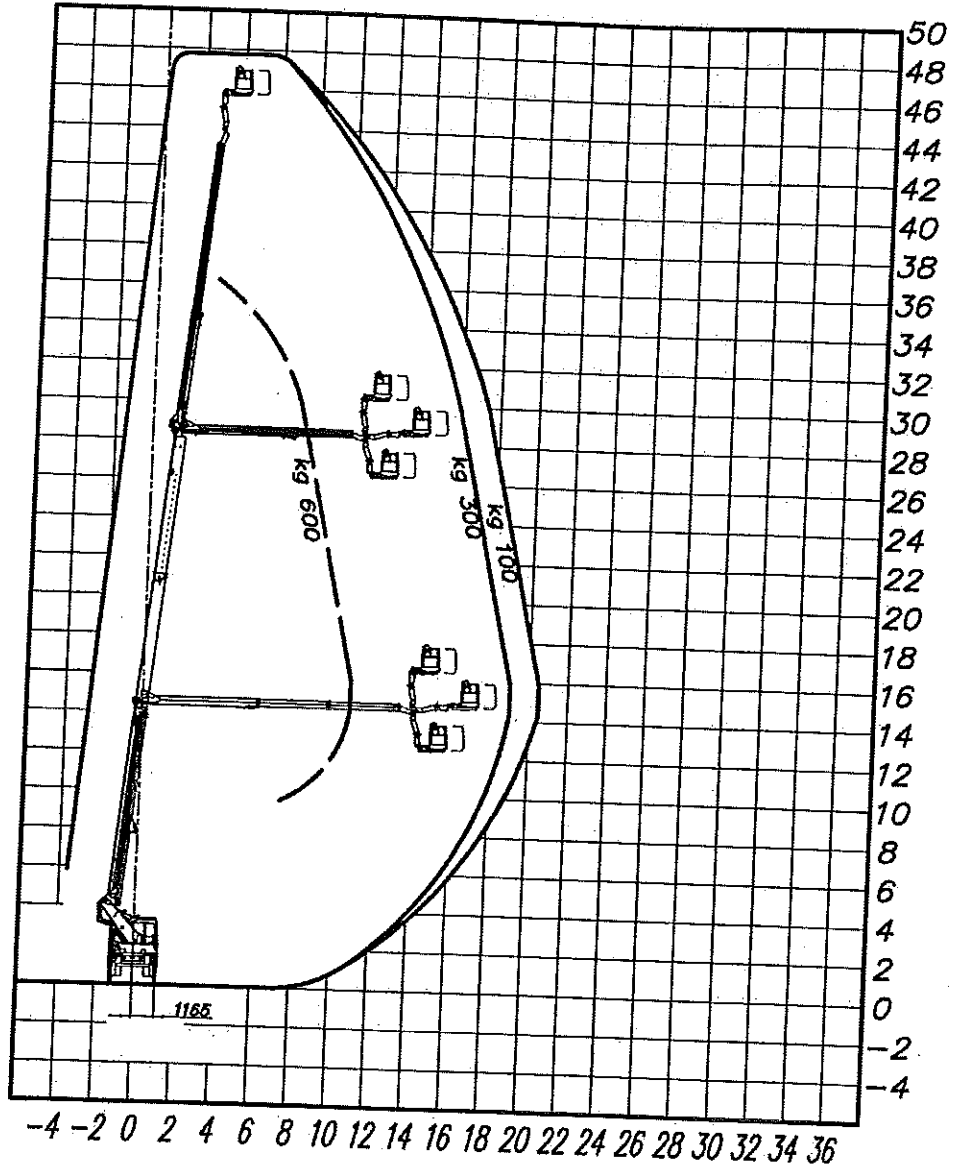
PERFORMANCES DEPENDS ON THE VEICLE AND THE EFFECTIVE STABILITY OF THE FINAL EQUIPMENT



I dati e le dimensioni sono forniti a titolo indicativo e non impegnativo.
Data and descriptions are approximate and not binding.
Toutes les données et descriptions sont fournies à titre indicatif, sans engagement.
Angaben und Beschreibungen sind nicht verbindlich.

DES. <u>P.T.</u>	APPROX. <u>M.B.</u>
CODICE <u>N0150598</u>	
DATA <u>02/11/15</u>	MOO. <u>A</u>

AREA DI LAVORO 4 - LATERALE CON TRAVERSE IN SAGOMA - N0150599



47 TJ
Installazione su veicolo PTT 26t
Area 4 laterale in sagoma

PRESTAZIONI VARIABILI IN FUNZIONE
 DELL'ALLESTIMENTO E DEL VEICOLO

PERFORMANCES DEPENDS ON THE
 VEICLE AND THE EFFECTIVE STABILITY
 OF THE FINAL EQUIPMENT

I dati e le dimensioni sono forniti a titolo indicativo e non impegnativo.
 Data and descriptions are approximate and not binding.
 Toutes les données et descriptions sont fournies à titre indicatif, sans engagement.
 Angaben und Beschreibungen sind nicht verbindlich.

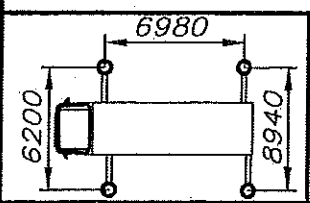
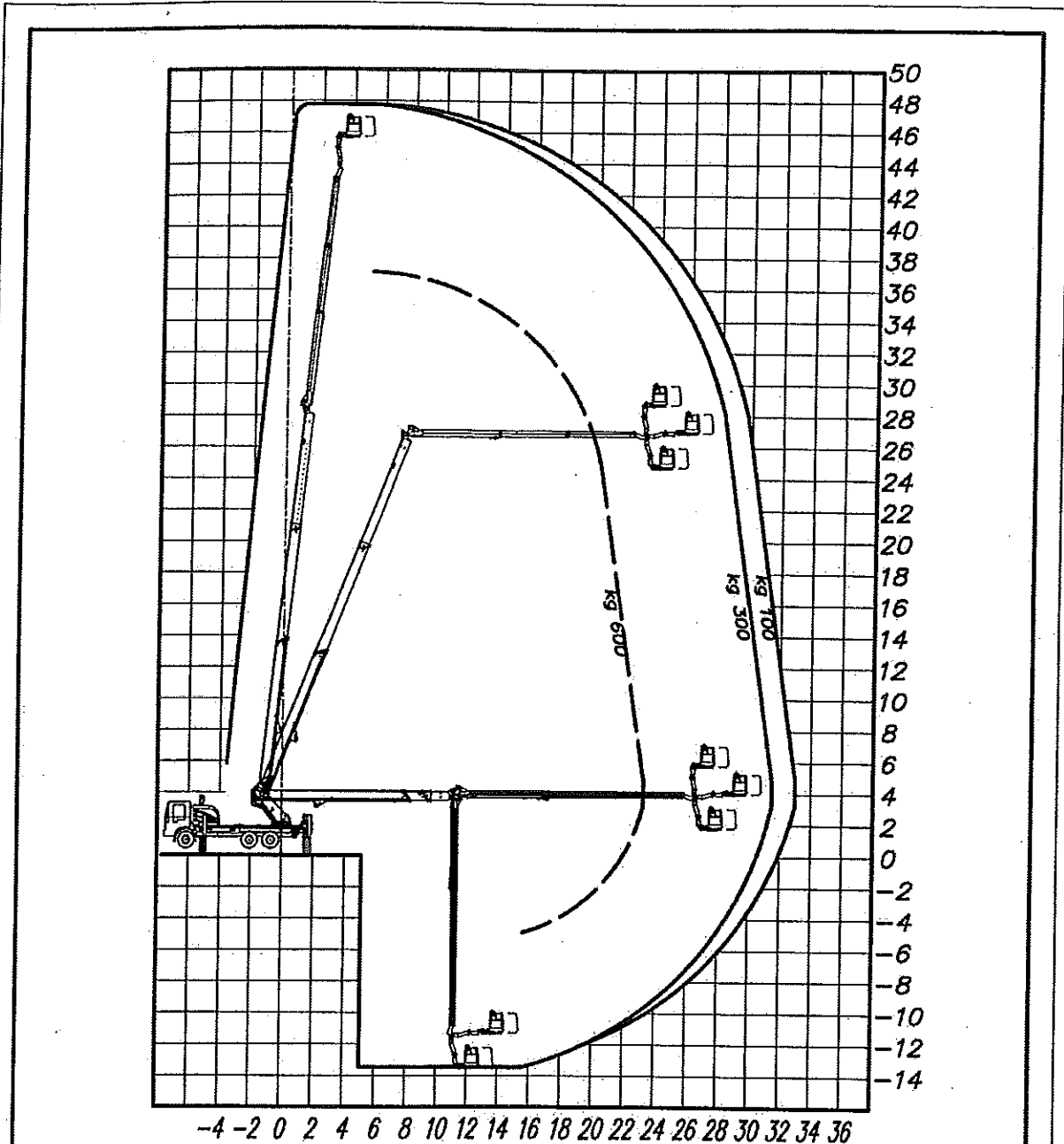


DES. P.T. APPROV. M.B.

CODICE N0150599

DATA 04/11/15 WCA A

**AREA DI LAVORO 6 -POSTERIORE CON TRAVERSE COMPLETAMENTE ESTESE -
N0150611**



47 TJJ
Installazione su veicolo PTT 26t
Area 6 Settore posteriore

PRESTAZIONI VARIABILI IN FUNZIONE DELL'ALLESTIMENTO E DEL VEICOLO

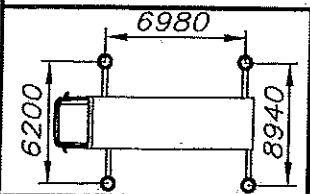
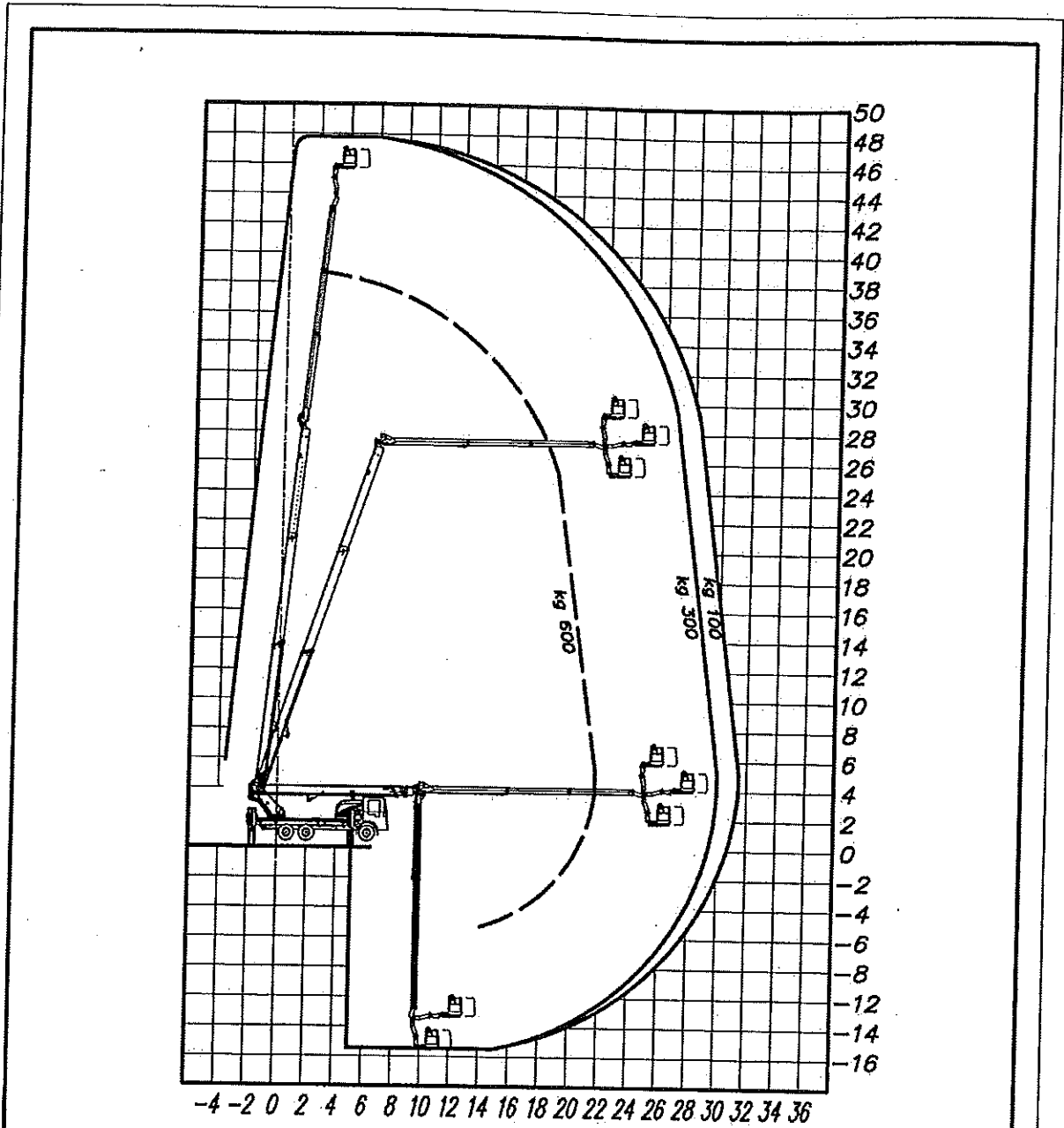
PERFORMANCES DEPENDS ON THE VEICLE AND THE EFFECTIVE STABILITY OF THE FINAL EQUIPMENT



I dati e le dimensioni sono forniti a titolo indicativo e non impegnativo.
 Data and descriptions are approximate and not binding.
 Toutes les données et descriptions sont fournies à titre indicatif, sans engagement.
 Angaben und Beschreibungen sind nicht verbindlich.

DS. <u>P.T.</u>	APPROV. <u>M.B.</u>
CODICE <u>N0150611</u>	
DATA <u>04/11/15</u>	NO. <u>/</u>

AREA DI LAVORO 8 - ANTERIORE CON TRAVERSE COMPLETAMENTE ESTESE - N0150610



47 TJJ
 Installazione su veicolo PTT 26t
 Area 8 settore anteriore

PRESTAZIONI VARIABILI IN FUNZIONE DELL'ALLESTIMENTO E DEL VEICOLO

PERFORMANCES DEPENDS ON THE VEICLE AND THE EFFECTIVE STABILITY OF THE FINAL EQUIPMENT

I dati e le dimensioni sono forniti a titolo indicativo e non impegnativo.
 Data and descriptions are approximate and not binding.
 Toutes les données et descriptions sont fournies à titre indicatif, sans engagement.
 Angaben und Beschreibungen sind nicht verbindlich.

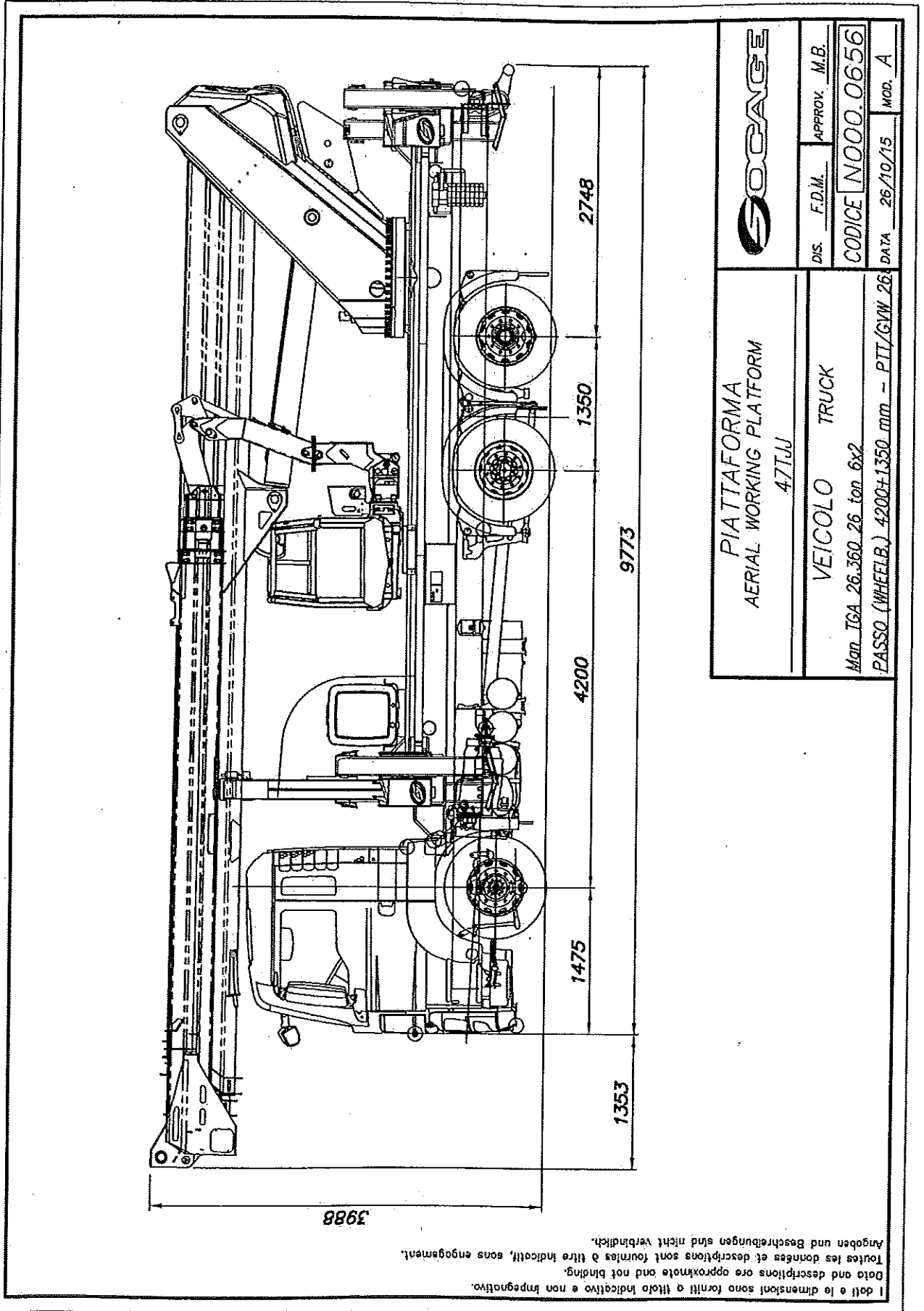


DES. P.T. APPROV. M.B.

CODICE N0150610

DATA 04/11/15 MOD. /

SCHEMA GENERALE



I dati e le dimensioni sono forniti a titolo indicativo e non impegnativo.
 Data and descriptions are approximate and not binding.
 Toutes les données et descriptions sont fournies à titre indicatif, sans engagement.
 Angaben und Beschreibungen sind nicht verbindlich.

PIATTAFORMA AERIAL WORKING PLATFORM 47TJU	DIS. F.D.M. APPROV. M.B.
VEICOLO TRUCK Man TGA 26.360.26 ton 6x2 PASSO (WHEELB.) 4200±1350 mm - PTT/GW 26	
CODICE N000.0656 DATA 26/10/15 MOD. A	