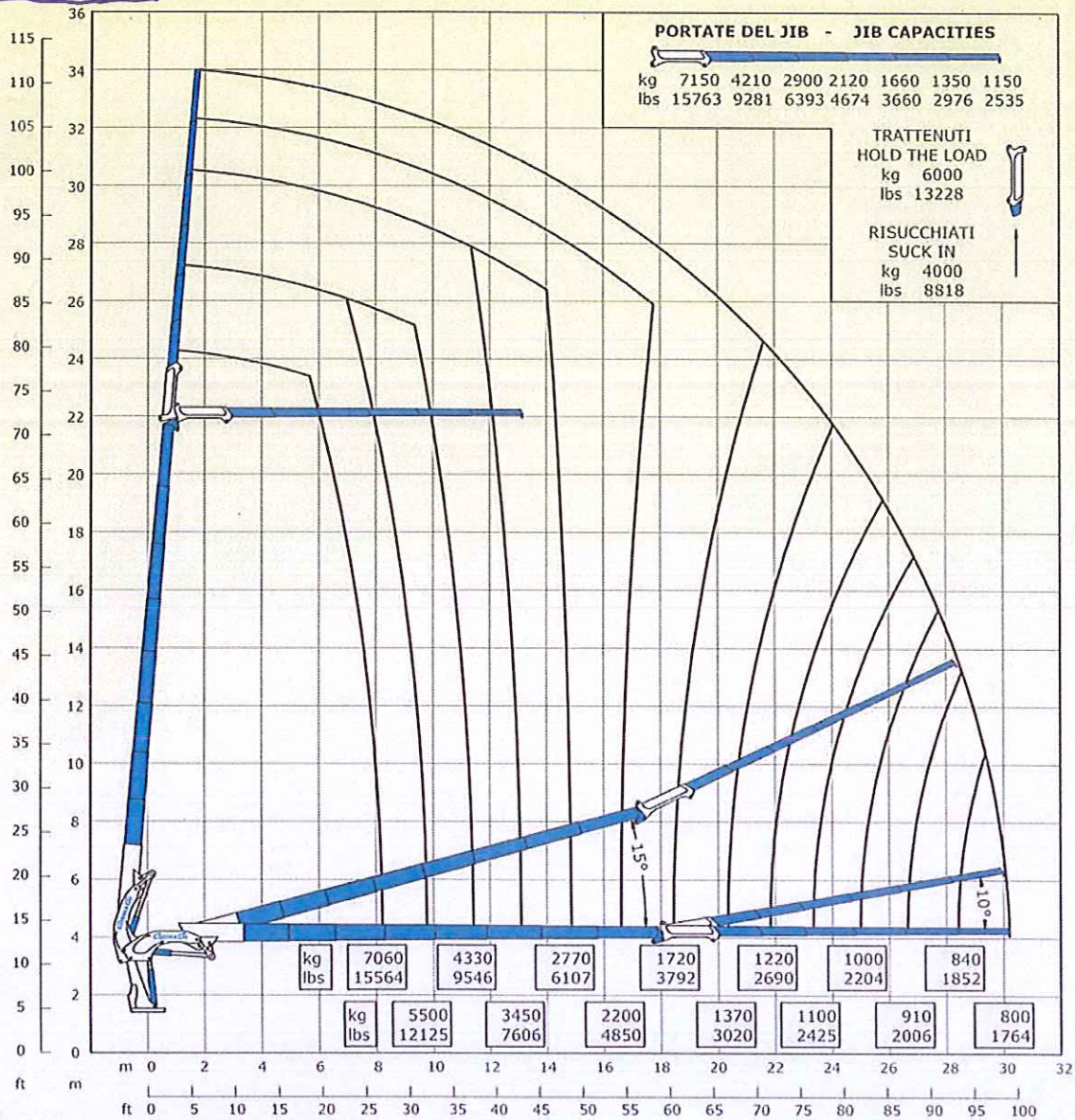


87 000 E8F186



E8F186		
87000 daN*m	629393 Lb*ft	Momento statico massimo al perno torretta - Max. static moment at the turret pin Moment statique max. a l'axe de la tourelle - Max. statisches ubmoment am kranauflaufbolzen
30.18 m	99' 0'	Sbraccio idraulico - Hydraulic boom length Longueur du bras hydraulique - Hydraulische reichweite
		Sbraccio con prolunghe manuali - Boom length with manual extension Longueur du bras avec rallonges manuelles - Auslegerlänge
8400 daN*m	60790 Lb*ft	Coppia di rotazione - Slew torque - Moment de rotation - Drehmoment
90 sec 360°	90 sec 360°	Tempo di rotazione - Slewing speed - Temp de rotation - Schwenkgeschwindigkeit
3475+2725 mm	11' 5" + 8' 11"	Uscita stabilizzatori - Outriggers extension - Sortie de bequilles - Breite der Abstützung
8550 mm	28' 0"	Larghezza stabilizzatori - Outriggers width - Largeur des bequilles - Gesamtbreite der Abstützung
2550 mm	8' 4"	Lunghezza - Length - Longueur - Gesamtbreite
1840 mm	6' 0"	Larghezza - Width - Largeur - Breite
2930 mm	9' 7"	Altezza - Height - Hauteur - Höhe
10420 kg	22972 lbs	Peso (senza olio e montaggio) - Weight (without oil and fitting) Poids (sans huile et montage - Gewicht (ohne Öl und ohne
100 l/min	26 us gal/min	Portata pompa - Pump delivery - Capacité de la pompe - Pumpenleistung
310 bar	4408 psi	Pressione - Pressure - Pression - Druck
260 l	69 us gal	Capacità serbatoio olio - Oil tank capacity - Capacité du réservoir de l'huile - Oil tank inhalt

STANDARD



OPTIONAL



E9		E11		E8F182		E8F183		E8F184		E8F185		E8F186	
m	kg	m	kg	m	kg	m	kg	m	kg	m	kg	m	kg
ft	lbs	ft	lbs	ft	lbs	ft	lbs	ft	lbs	ft	lbs	ft	lbs
4.20	15850	4.42	14860	7.93	7710	8.01	7530	8.09	7350	8.15	7200	8.21	7060
13'9"	34943	14'6"	32760	26'0"	17000	26'3"	16600	26'5"	16204	26'9"	15873	26'11"	15564
5.67	11480	5.89	10780	9.47	6060	9.55	5900	9.63	5750	9.69	5610	9.75	5500
18'7"	25309	19'4"	23765	31'0"	13360	31'4"	13007	31'7"	12676	32'9"	12368	32'0"	12125
7.21	8750	7.43	8180	11.07	4860	11.15	4710	11.23	4570	11.29	4440	11.35	4330
23'8"	19290	24'4"	18033	36'4"	10714	36'7"	10384	36'10"	10075	37'0"	9788	37'3"	9546
8.81	6910	9.03	6420	12.76	3940	12.84	3800	12.92	3670	12.98	3550	13.04	3450
28'11"	15234	29'7"	14153	41'10"	8686	42'2"	8377	42'4"	8091	42'6"	7826	42'9"	7606
10.50	5600	10.72	5150	14.50	3240	14.58	3110	14.66	2980	14.72	2870	14.78	2770
34'5"	12345	35'2"	11354	47'7"	7143	47'10"	6856	48'2"	6570	48'3"	6327	48'6"	6107
12.24	4650	12.46	4220	16.30	2650	16.38	2520	16.46	2400	16.52	2300	16.58	2200
40'2"	10251	40'11"	9303	53'6"	5842	53'9"	5556	54'0"	5291	54'2"	5070	54'5"	4850
14.04	3950	14.26	3530	18.20	2170	18.28	2050	18.36	1930	18.42	1820	18.48	1720
46'1"	8708	46'9"	7782	59'8"	4784	60'0"	4519	60'2"	4255	60'4"	4012	60'7"	3792
15.94	3330	16.16	2930	20.16	1820	20.24	1700	20.32	1570	20.38	1470	20.44	1370
52'4"	7341	53'0"	6460	66'2"	4012	66'5"	3748	66'8"	3461	66'10"	3240	67'1"	3020
17.90	2870	18.12	2500	21.62	1660	21.70	1540	21.78	1420	21.84	1320	21.90	1220
58'9"	6327	59'5"	5511	70'11"	3660	71'2"	3395	71'5"	3131	71'7"	2910	71'10"	2690
19.94	2520	20.16	2150	23.11	1540	23.19	1420	23.27	1300	23.33	1200	23.39	1100
65'5"	5555	66'2"	4740	75'10"	3395	76'1"	3131	76'4"	2866	76'6"	2645	76'9"	2425
		22.23	1900			24.84	1310	24.92	1200	24.98	1080	25.04	1000
		72'11"	4189			81'5"	2888	81'9"	2645	82'0"	2381	82'2"	2204
		24.30	1710					26.57	1100	26.63	1000	26.69	910
		79'8"	3770					87'2"	2425	87'4"	2204	87'7"	2006
										28.39	930	28.45	840
										93'1"	2050	93'4"	1852
												30.18	800
												99'0"	1764

